

**CONTAMINATED SEDIMENTS:
REMEDICATION AND LIABILITY**

Minnesota State Bar Association
Environmental, Natural Resources
and Energy Law Section

February 25, 2014

Denis Roznowski, P.E., Foth
Curtis Hudak, P.G., Foth
James Payne, Environmental Law Group

SEDIMENT REMEDIATION RESOURCES

U.S. EPA:

The primary EPA guidance document is the agency's 2005 "Contaminated Sediment Remediation Guidance for Hazardous Waste Sites":

< <http://www.epa.gov/superfund/health/conmedia/sediment/pdfs/guidance.pdf> >

EPA's summary of the Guidance document:

< <http://www.epa.gov/superfund/health/conmedia/sediment/guidance.htm> >

EPA's list of contaminated sediment sites:

< <http://www.epa.gov/superfund/health/conmedia/sediment/guidance.htm> >

EPA's list of guidance documents on remediation of contaminated sediment sites:

< <http://www.epa.gov/superfund/health/conmedia/sediment/documents.htm> >

EPA's Technology Information and Field Service Division's website with information on sediment remediation:

< <http://clu-in.org/contaminantfocus/default.focus/sec/sediments/cat/Overview/> >

MINNESOTA POLLUTION CONTROL AGENCY:

MPCA's primary webpage regarding sediment remediation:

< <http://www.pca.state.mn.us/index.php/water/water-monitoring-and-reporting/contaminated-sediments/index.html> >

MPCA's 2007 "Guidance for the Use and Application of Sediment Quality Targets for the Protection of Sediment-dwelling Organisms in Minnesota:

< <http://www.pca.state.mn.us/index.php/view-document.html?gid=9163> >

Information on the St. Louis River Area of Concern:

< <http://www.pca.state.mn.us/index.php/water/water-monitoring-and-reporting/contaminated-sediments/sediment-studies-st.-louis-river-area-of-concern.html> >

EXAMPLES OF SEDIMENT MANAGEMENT STANDARDS FROM OTHER STATES:

State of Washington: < http://www.ecy.wa.gov/programs/tcp/smu/sed_standards.htm >

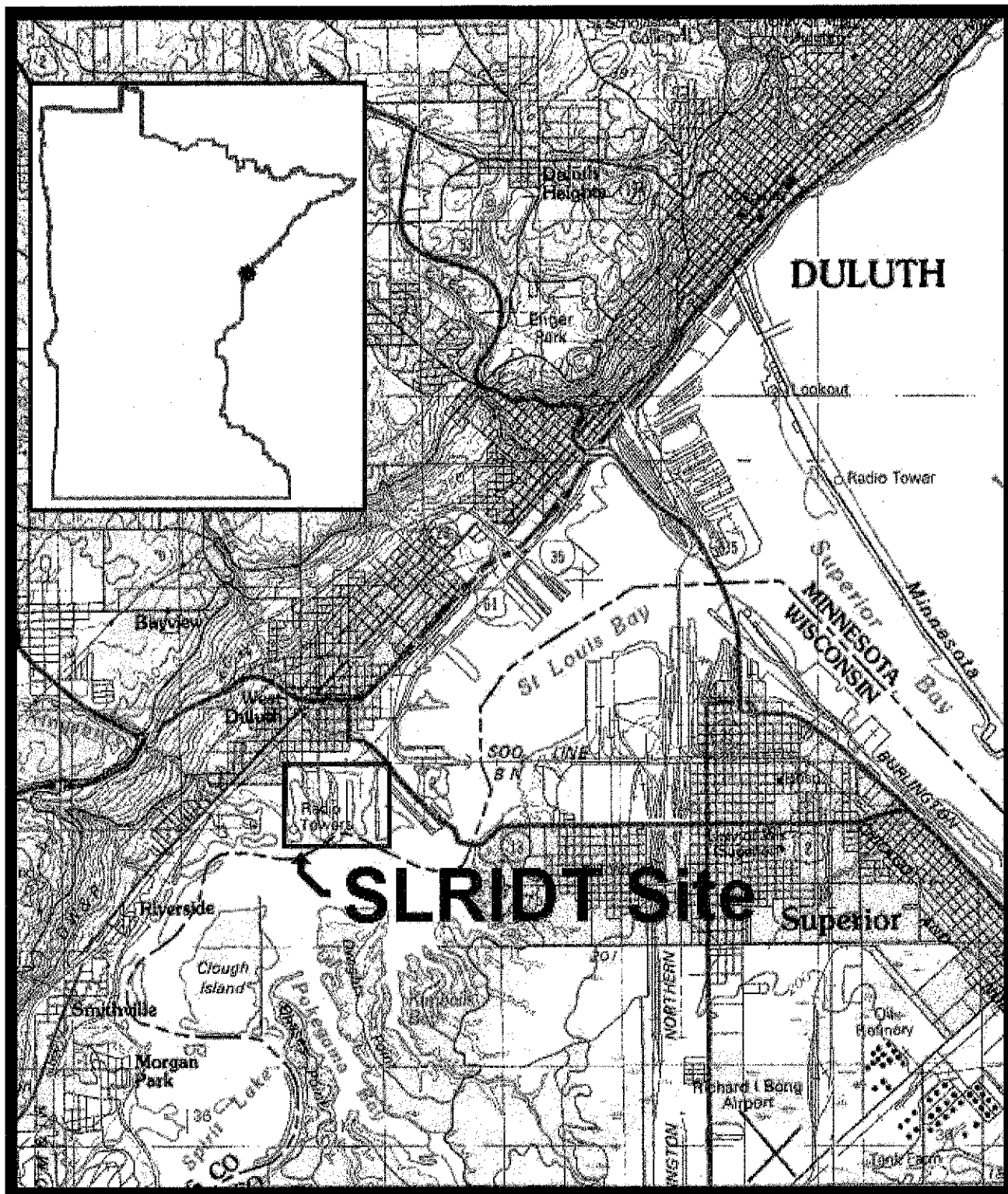


Figure 1.3.1-1. Site Location Map

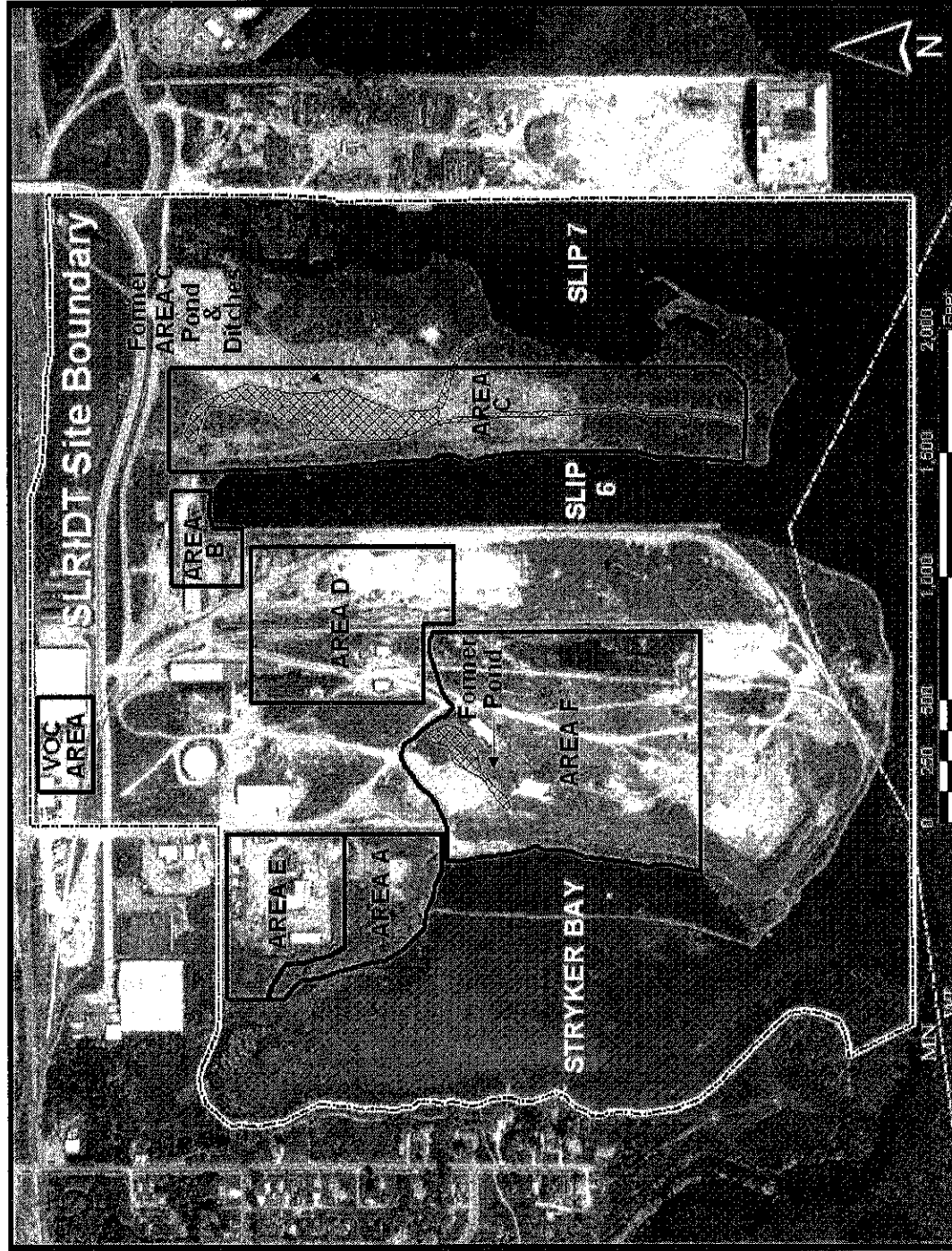


Figure 1.3.1-2. Detailed Site Map With Area Designations