



Buffer Update

Tom Gile | Buffer and Soil Erosion Program Coordinator

- 50 foot average for public waters (30' min)
 - As Identified on the Public Waters Inventory
(2016 amendment)
- 16.5 foot minimum for chapter 103E Public Drainage Systems
- Perennial Vegetation (Does not prescribe Native Veg)
- Provision for “Alternative Practices” to reduce buffer width

What & Where



DNR Buffers



dnr buffers

Remove

All Shopping Images News Videos More Search tools

About 383,000 results (0.42 seconds)

Buffer Mapping Project: Minnesota DNR

dnr.state.mn.us/buffers/index.html Minnesota Department of Natural Resources

The DNR's role in Minnesota's buffer law is to produce and maintain a map of public waters and public ditch systems that require permanent vegetation buffers.

You've visited this page 4 times. Last visit: 8/29/16

DNR Buffer Map

Buffer Map Viewing Application ...
minimum state standard in the ...

[More results from dnr.state.mn.us](#)

DNR Buffer Mapping Project

DNR has a specific role in the new ...
We call it the Buffer Mapping ...

Home > Ecological and Water Resources (Waters) > Water Management >

Division of Ecological and Water Resources (Waters)

[Main page](#)

[Contact us](#)

[Permits](#)

[Publications](#)

[Water education \(Project WET\)](#)

[Water Statutes and Rules](#)

[External links](#)

[LakeFinder](#)

[Recreation Compass](#)

Buffer Mapping Project



Minnesota's Buffer Protection Map

[Buffer Map](#)

[Statewide Data Layer](#)

Minnesota's buffer law establishes new perennial vegetation buffers of up to 50 feet along rivers, streams and ditches that will help filter out

Common buffer questions

Click on questions below to show answers.
Click again to hide.

[What are Public Waters?](#)

[How will Public Waters be mapped?](#)

[Why aren't all wetlands shown on the buffer map?](#)

PRELIMINARY

COMPLIANCE



Challenges

November 2017 

Su	Mo	Tu	We	Th	Fr	Sa
		1	2	3	4	
5	6	7	8	9	10	11
12	13	14	15	16	17	18
19	20	21	22	23	24	25
26	27	28	29	30		

© www.calendarpedia.com

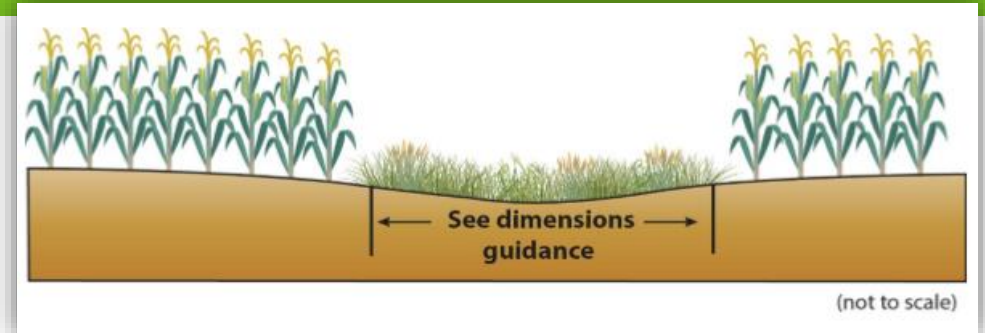
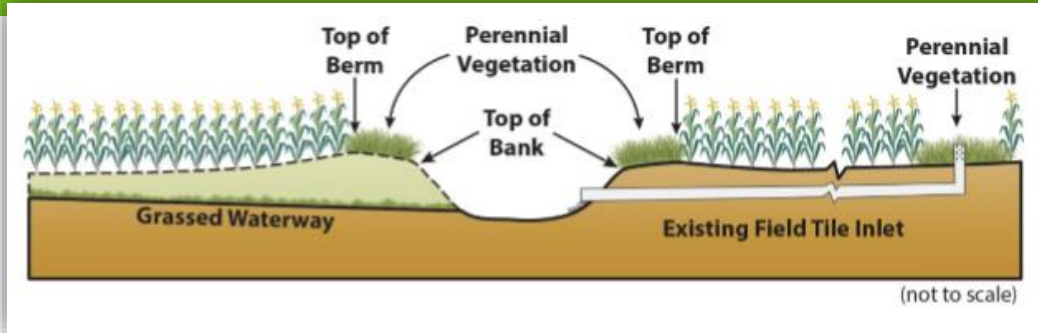
- Practices Installed on Public Waters
- Compliance waiver for Financial Assistance until 2018

November 2018

Su	Mo	Tu	We	Th	Fr	Sa
			1	2	3	
4	5	6	7	8	9	10
11	12	13	14	15	16	17
18	19	20	21	22	23	24
25	26	27	28	29	30	

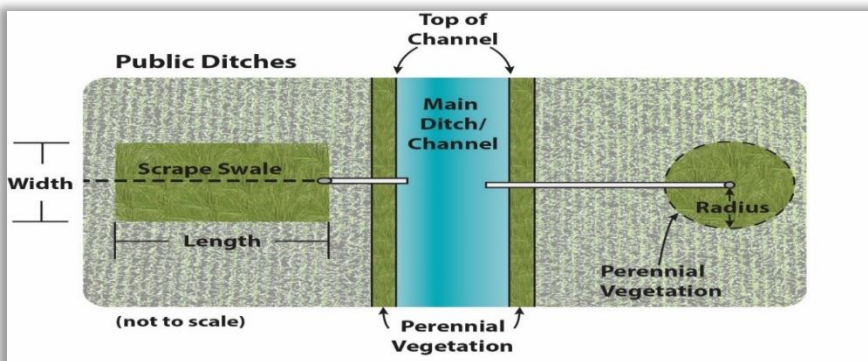
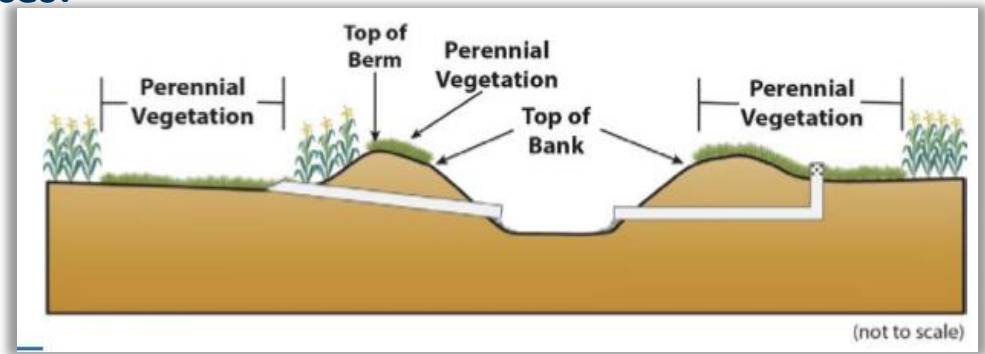
- Practices Installed on Public Ditches

Success?



Construction of the “6-pack” of Common Alternative Practices:

1. Minnesota Agricultural Water Quality Certification Program
2. USDA-FOTG Practice Standards Filter Strip (393/391)
3. Grassed Waterway/Cultivated Watercourses
4. Negative slopes or concentrated inflow - public ditches
5. Negative slopes or concentrated inflow – public waters
6. Conservation Tillage/Cover Crops with Vegetated Filter Strip

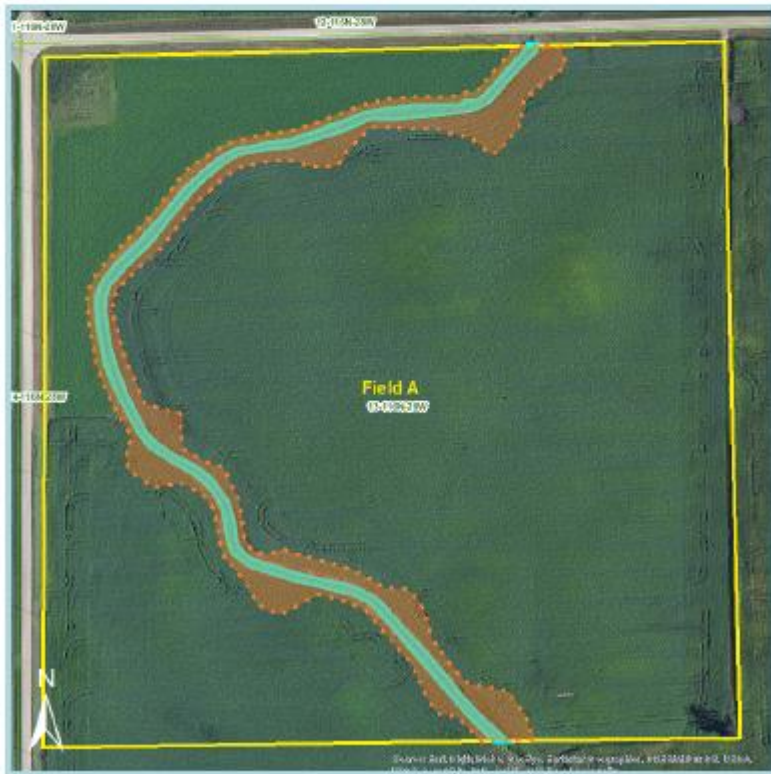


“Other” Alternative Practices

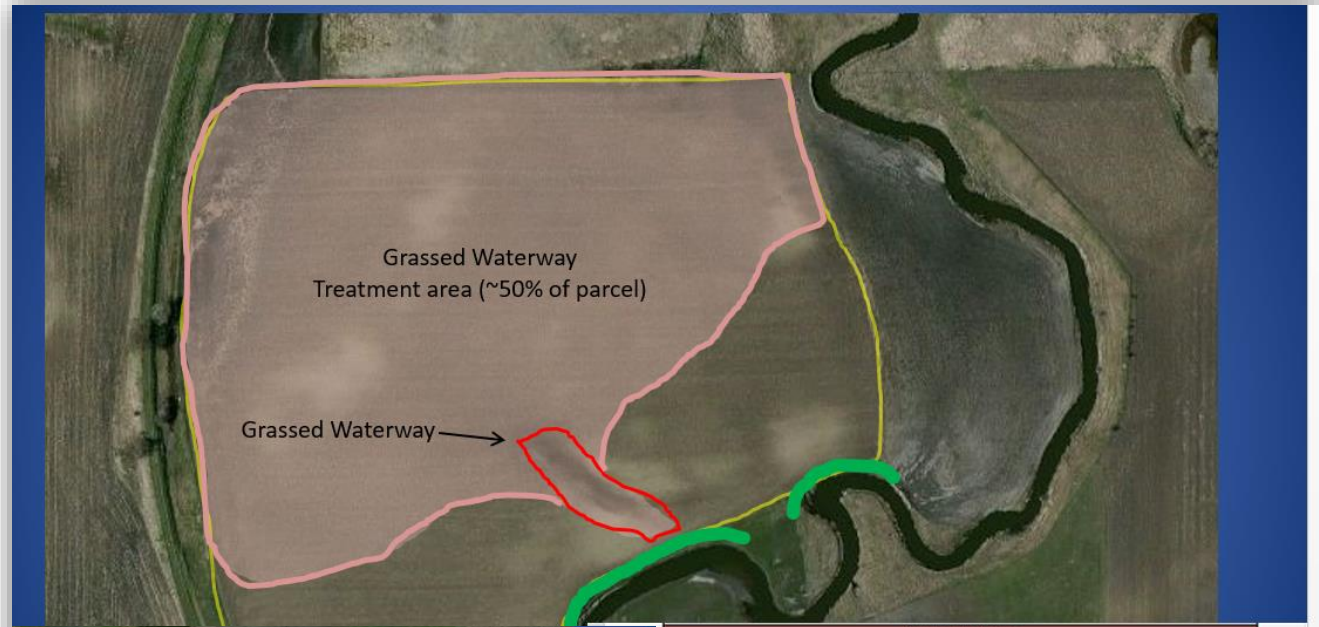
BufferBuilder



Client: Branch of South Fork of Crow River
 Farm: Test Site McLeod County
 Location: McLeod County, MN
 Sec/Twp/Rng: 13 116N 028W



U of MN/MN Corn Growers Decision Support Tool



Baseline Site Conditions without Vegetative Buffer		Alternative BMP Choices			
Agroecoregion	Coteau	Best Management Practice (NRCS Standard #)	Sediment Reduction (t/ac/yr)	Phosphorus Reduction (lb P/ac/yr)	
Current Management Condition	Poor	No-Till/Strip-Till (329)	8.44	0.75	
Are riparian berms present that interrupt sheet flow?	No	Cover Crops (340)	5.82	0.39	
Baseline Sediment Export (t/ac/yr)	9.38	Contour Buffer Strips (332)	8.16	0.65	
Baseline Phosphorus Export (lbs P/ac/yr)	1.00	Contour Stripecropings (585)	6.47	0.78	
		Reduced width Buffer (*)	0.65	0.01	16.5
		Terraces (600)	0.75	0.07	10
		Wetland Construction (658)	0.00	0.00	10
		Wetland Restoration (657)	0.00	0.00	10
		Water and Sediment Control Basin (638)	0.60	0.07	10
		Side Inlets (410)	0.00	0.00	10
		Grassed Waterway (412)	3.61	0.04	50
		Vegetative Buffer Reduction Goal	1.66	0.04	
		Total Reduction of selected BMPs	4.27	0.05	
		Acceptable BMP Combination?	YES	YES	
Vegetative Buffer Water Quality Improvement Goals					
Buffer Width Required	50' (Public Water)				
Average field Slope	5% - 7.5%				
Soil Texture	Fine (Clay Loam, Silty Clay Loam, Silt)				
Vegetative Buffer Sediment Reduction Goal (t/ac/yr)	1.66				
Vegetative Buffer Phosphorus Reduction Goal (lbs P/ac/yr)	0.04				

Examples of Buffers Going In



Marshall County



Chippewa County



Otter Tail County



Cottonwood County

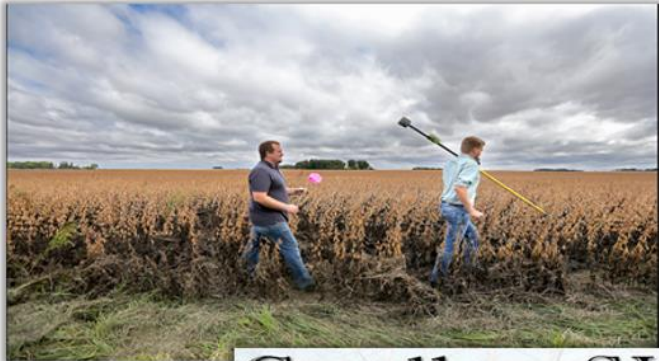


Mower County



Wilkin County

Success?



Free Drill Use for Buffers!

In 2016 the Goodhue County SWCD Supervisors adopted a local drill program for landowners interested in seeding down buffer areas next to streams and ditches. The SWCD will provide the use of the drill and provide a grassed waterway seed mix to your site for free. Landowners will need to provide a +50-70hp tractor to pull the drill. We ask that you call to the office or fill out the online form to the right and you'll be placed on the drill list. Please be patient for delivery as we are expecting a large interest in the program in 2016 and 2017.

[What's a Buffer? click here for info](#)

No-Till Drill Sign Up

Please fill out the boxes below and click submit. You'll be added to our list and we'll contact you when the drill is in your area. Remember, you will need to provide a +50-70 horsepower tractor to run the no-till drill.

Name _____

Address _____

Phone Number _____

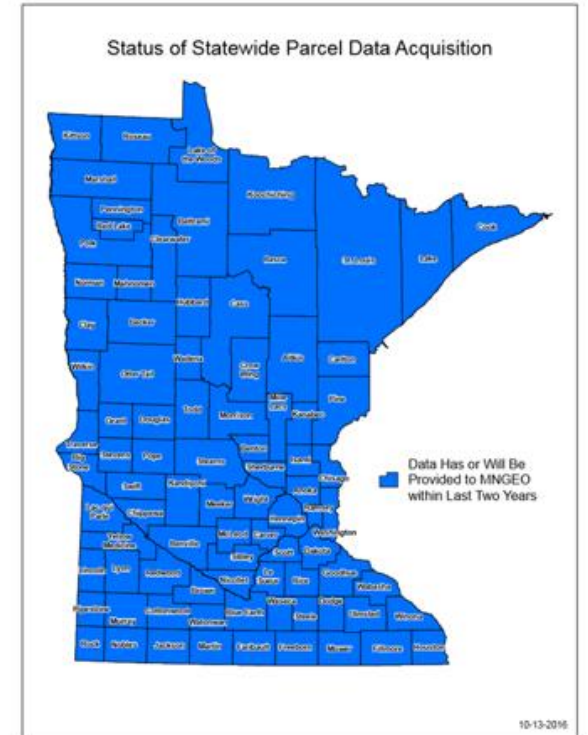
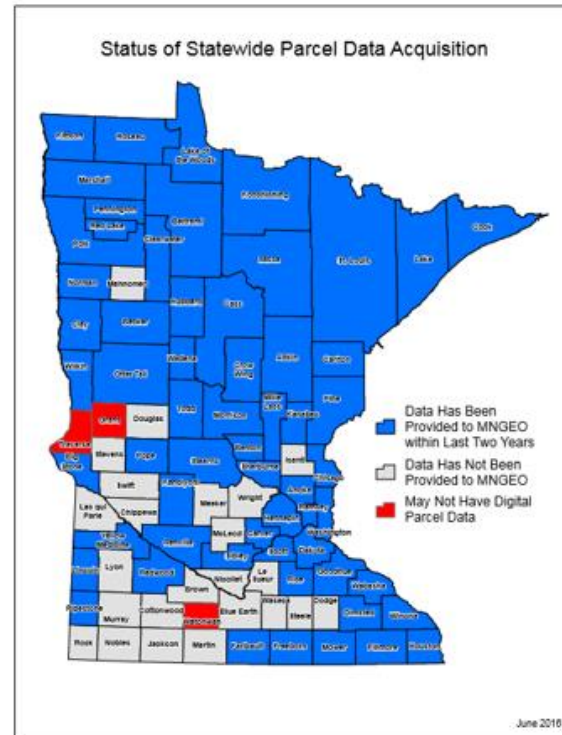
*Seed Type
 No-Till Seed Mix No-Till Mixture Other _____

*Buffer access during June and July months?
 Yes No

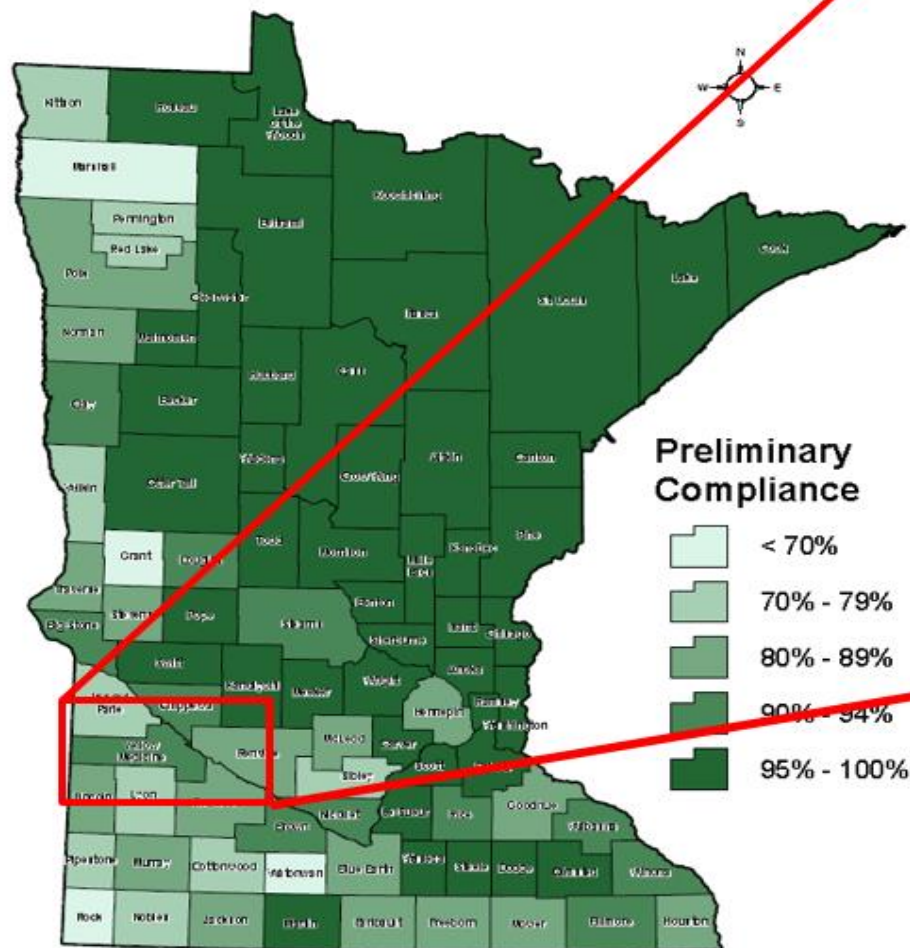
Approximate Seeding Area (acres)
 0-10 10-20 20-40 40-60



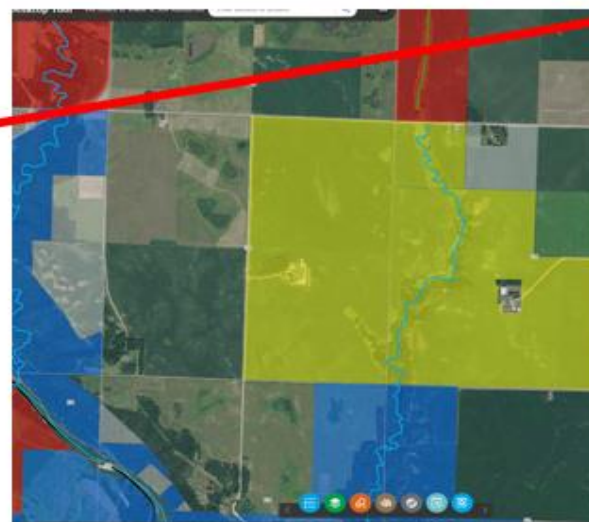
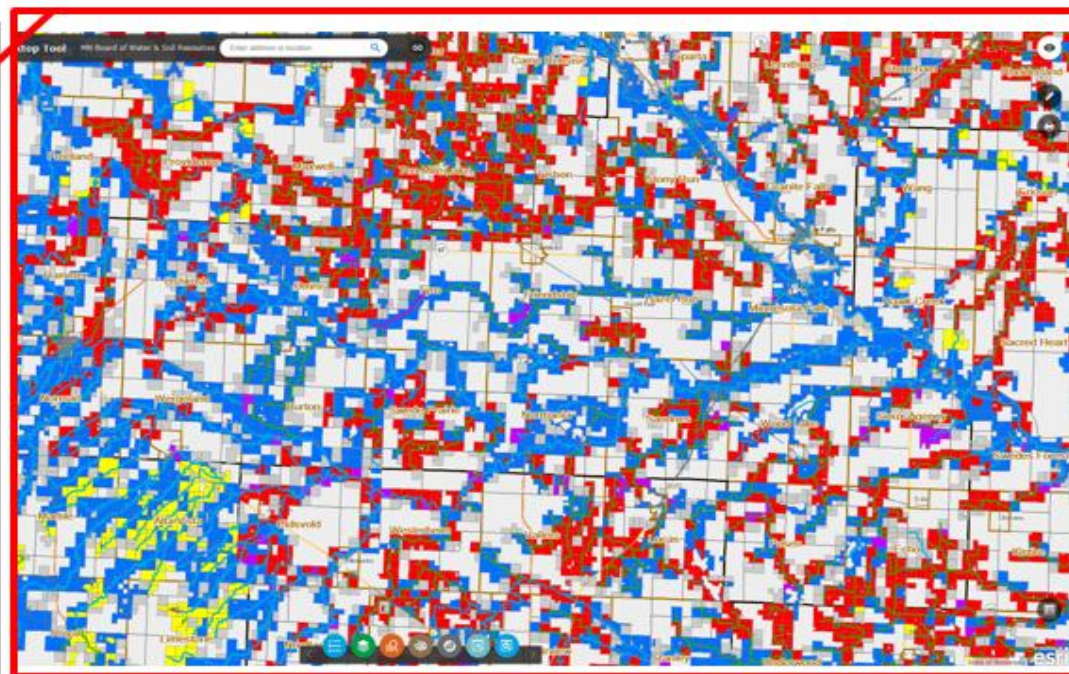
LGUs Make it Happen

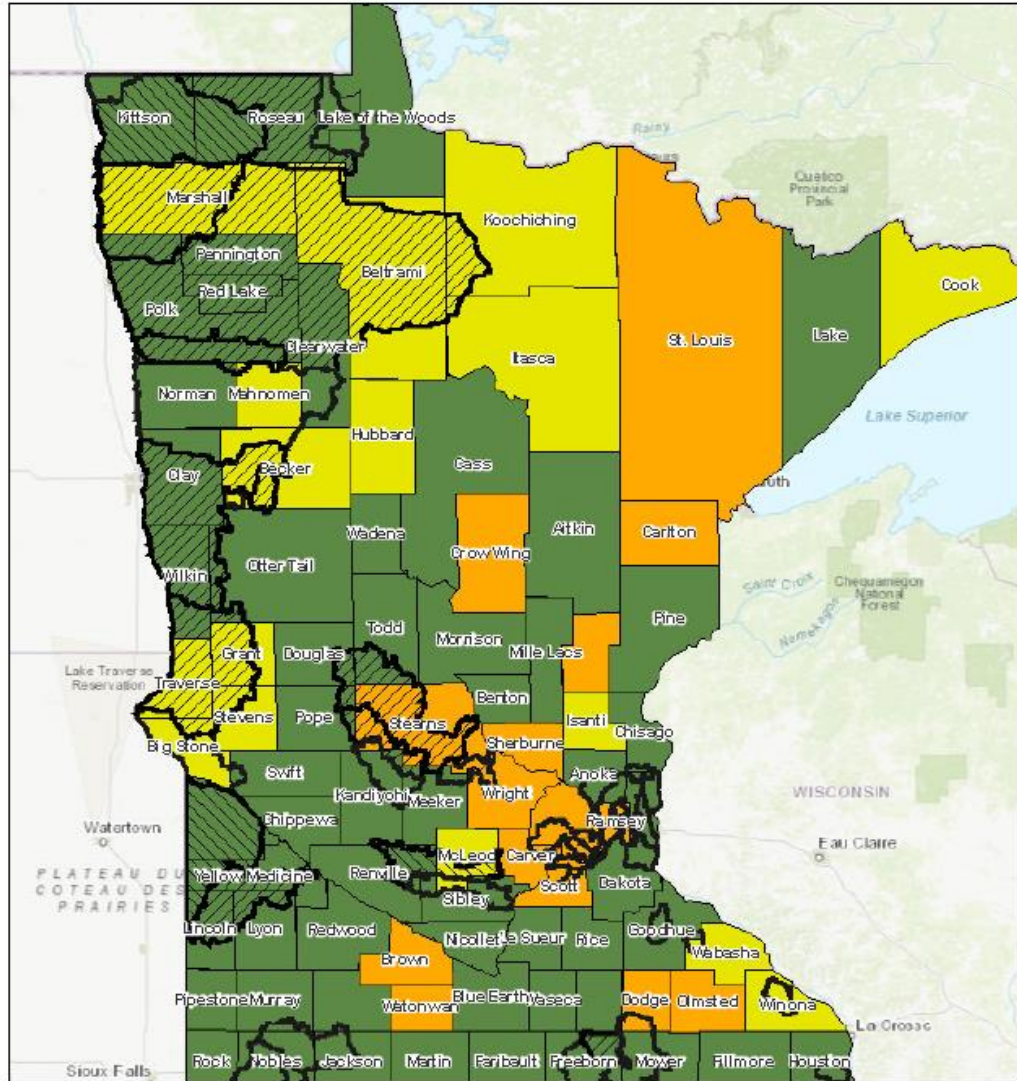


Estimated Percentage of Parcel Buffer Law Preliminary Compliance Public Waters Only (50 ft. Requirement)

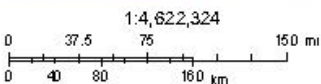


These preliminary compliance estimates were conducted by soil and water conservation districts based on parcel reviews via aerial/satellite imagery. It is important to note that these estimates do not imply or represent non-compliance. Additional field level reviews will be the next step in the inventory process.





2 / 7 / 2018 2 : 52 : 46 PM



- Watershed Districts**
- Elected Jurisdiction and Enacted Enforcement Procedures
 - Elected Jurisdiction
 - Did Not Elect Jurisdiction
- Counties**
- Elected Jurisdiction and Enacted Enforcement Procedures
 - Elected Jurisdiction
 - Did Not Elect Jurisdiction

Source: ERI, HERE, DeLorme, Intermap, increment P Corp., GEBCO, USGS, FAO, NPS, NRCAN, GeBCO, IGN, Esri, Swisstopo, Mapbox, OpenStreetMap contributors, and the Open User Community

MN Board of Water & Soil Resources
 ERI, HERE, Garmin, FAO, NOAA, USGS, EPA, NPS

Election of Jurisdiction

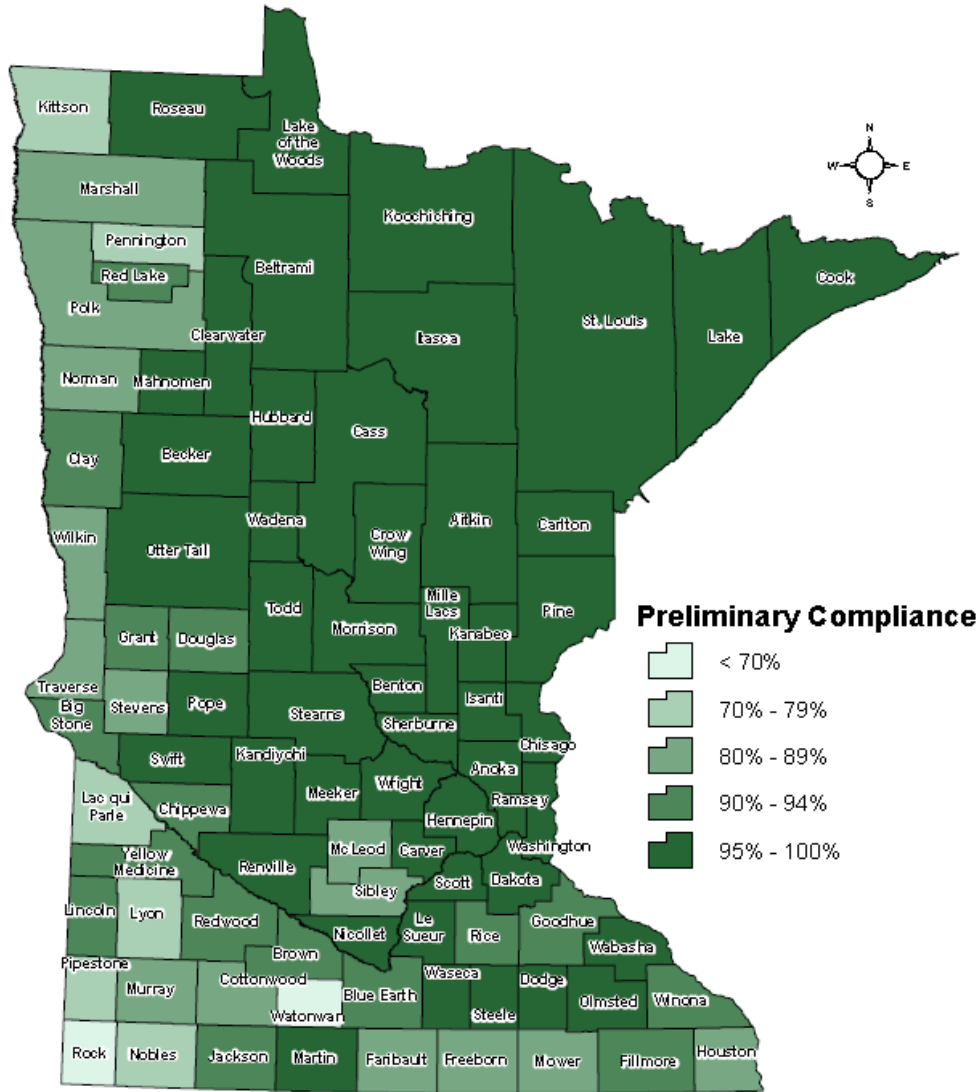
72 Counties Elected.

- 70 submitted for preliminary reviews
- 56 adopted & are “with Jurisdiction”
- 2 pending “with jurisdiction”

14 Watersheds Elected

- 7 submitted for preliminary reviews
- 1 pending “with jurisdiction”
- 2 looking into modified rule using 103E authorities

**Estimated Percentage of Parcel Buffer Law
Compliance on Public Waters Only (50 ft. Requirement)**



These preliminary compliance estimates were conducted by soil and water conservation districts based on parcel reviews via aerial/satellite imagery. It is important to note that these estimates do not imply or represent non-compliance. Additional field-level reviews will be the next step in the inventory process.



Buffer Compliance

Statewide, compliance numbers have now exceeded 98% for PWs.

Over 70% for Ditches

Thank YOU!