

State of Minnesota's Environment

John Linc Stine
Commissioner
Minnesota Pollution Control Agency



Our agency's vision

Water

Vision: Minnesota's clean water supports aquatic ecosystems, healthy communities and a strong economy



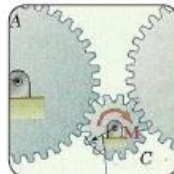
Air

Vision: Minnesota's clean and clear air supports healthy communities and a strong economy



Operations

Vision: The MPCA demonstrates excellence in operations



Land/waste

Vision: Minnesota's land supports healthy ecosystems and sustainable land uses



People and approaches

Vision: Minnesotans and the MPCA take actions to protect our land, water and air



MPCA Citizens' Board

- 9-member citizen board, chaired by Commissioner
 - One member must be knowledgeable of agriculture
 - One member represents organized labor
 - Appointed by governor
- Makes decisions on rules, environmental review and controversial regulatory issues
- Meets 1 day/month

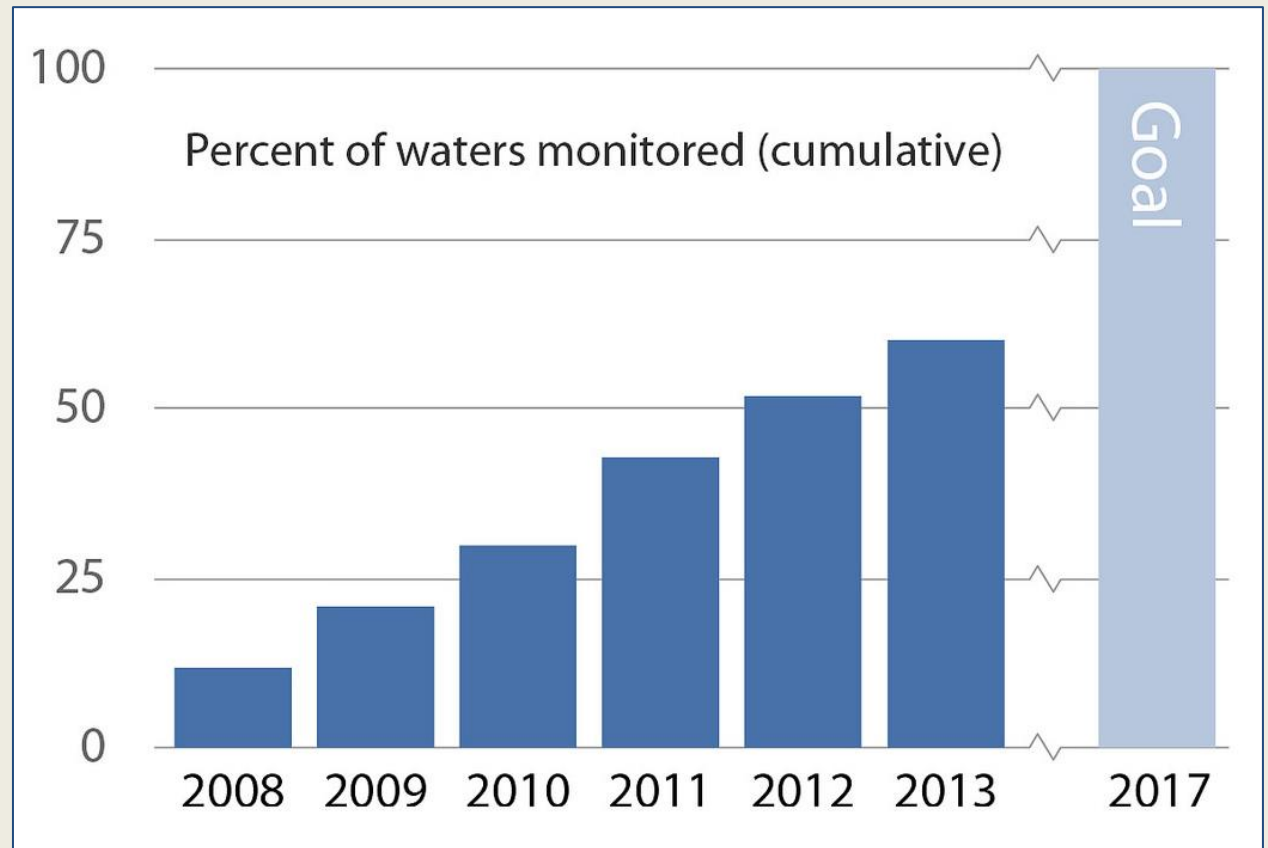


Water Quality



Progress in water monitoring

- 60% of watersheds have been tested
- By 2017, we will have tested all watersheds



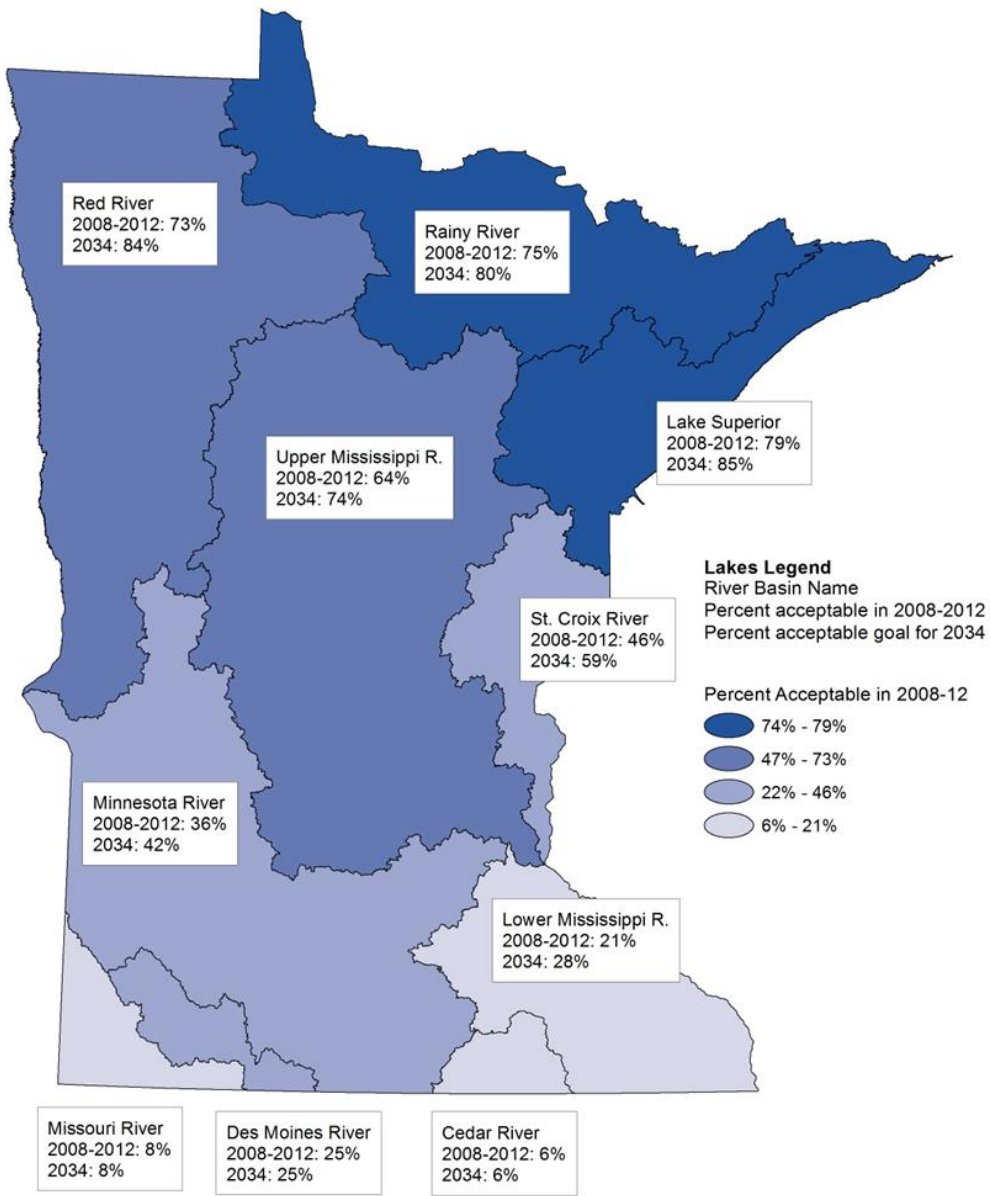
A road map to clean water



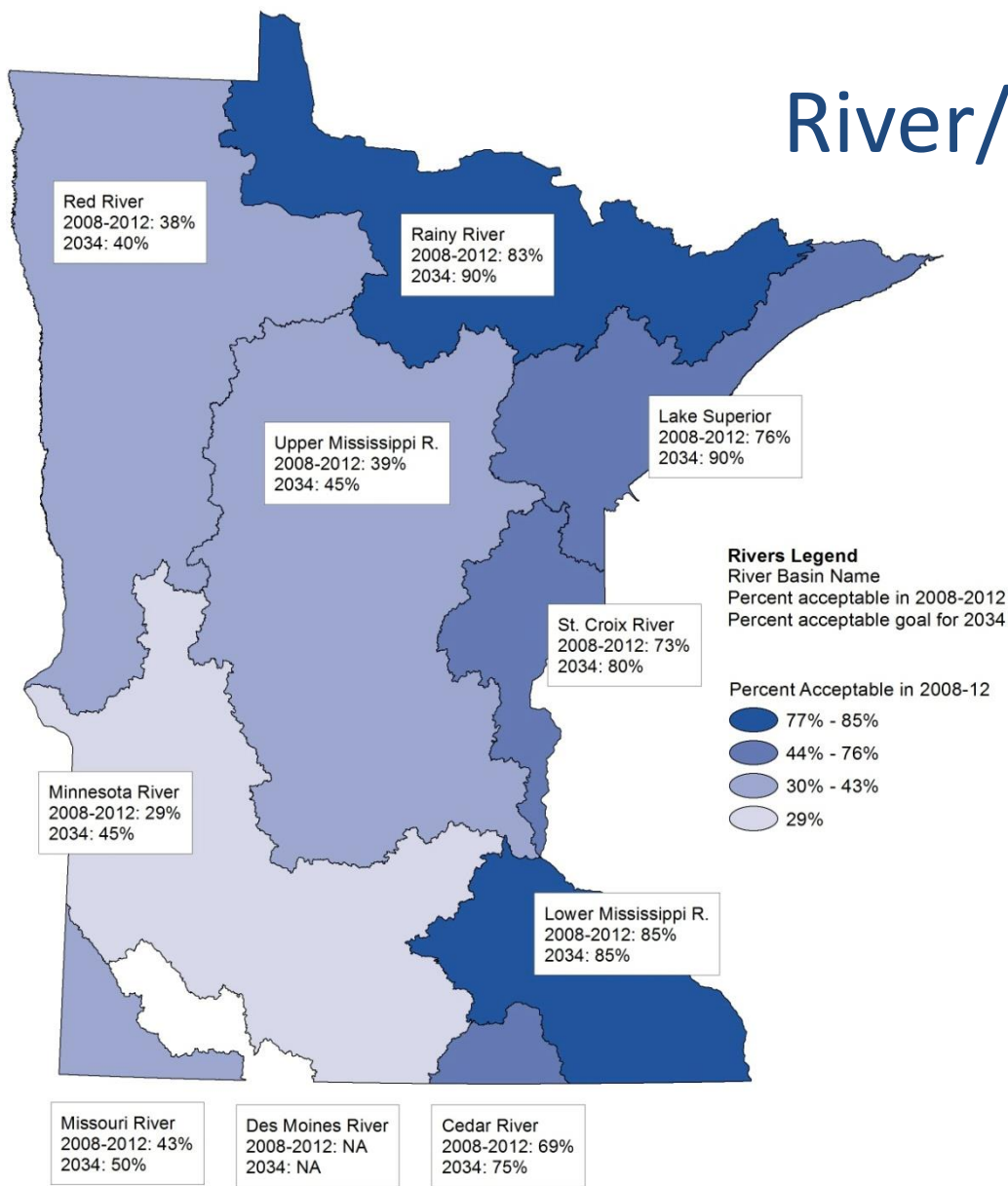
Lake Water Quality

Measure: Trophic State Index

2034 Goal: Increase the percentage of Minnesota lakes with good water quality from 62% to 70%.



River/Stream Water Quality

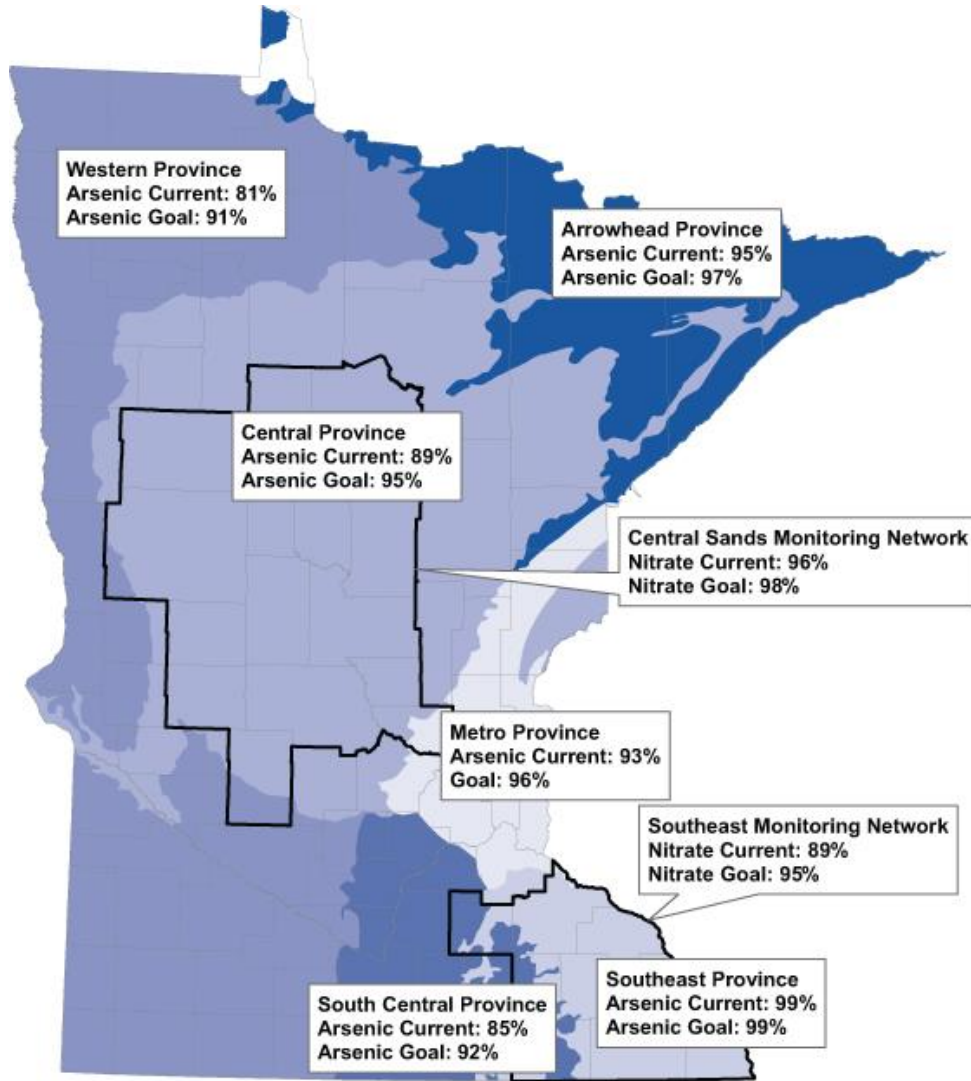


Measure: Fish-Based Index of Biotic Integrity

2034 Goal: Increase the percentage of Minnesota rivers and streams with healthy fish communities from 60% to 67%.



Groundwater Quality



Measure: Drinking water standards for arsenic and nitrate

2034 Goal: Reduce nitrate levels in groundwater by 20%.

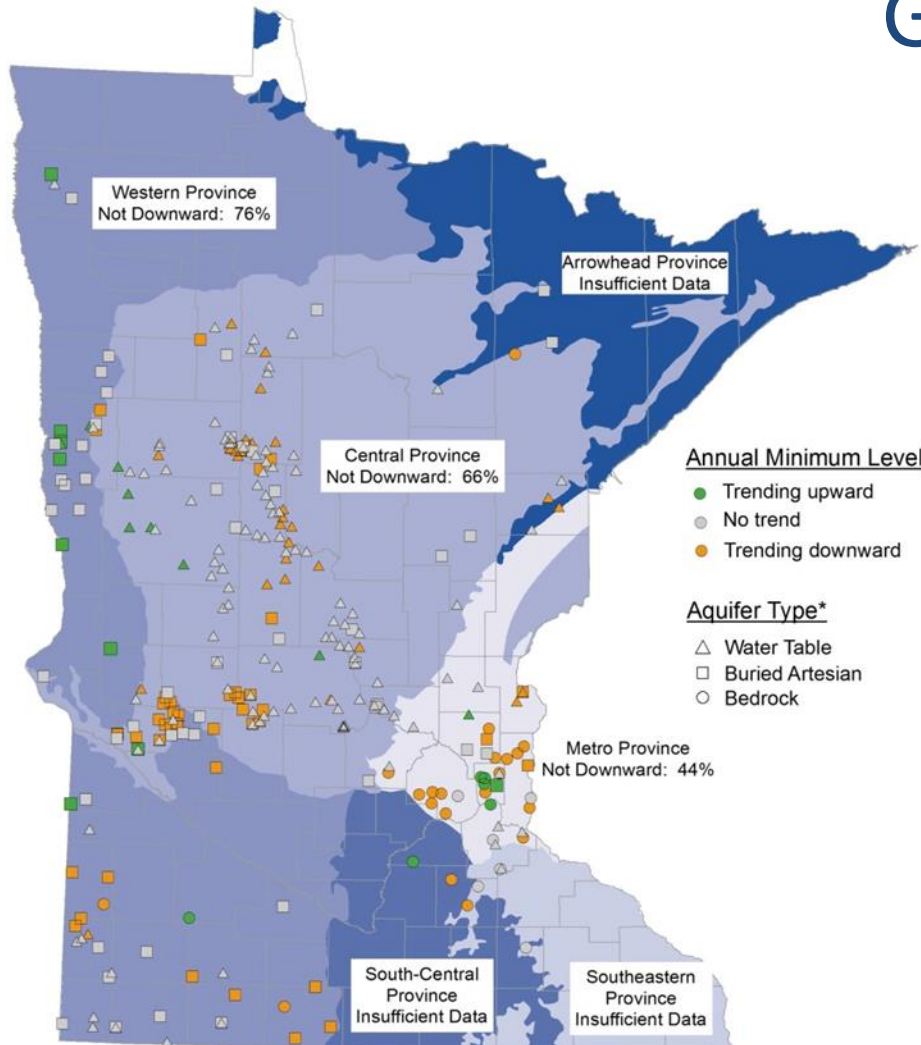
Reduce the percentage of new wells exceeding the arsenic standard by 50%



Groundwater Quantity

Measure: Changes over time in groundwater levels

2034 Goal: Ninety percent of groundwater monitoring sites affected by groundwater pumping will have either a steady or increasing trend



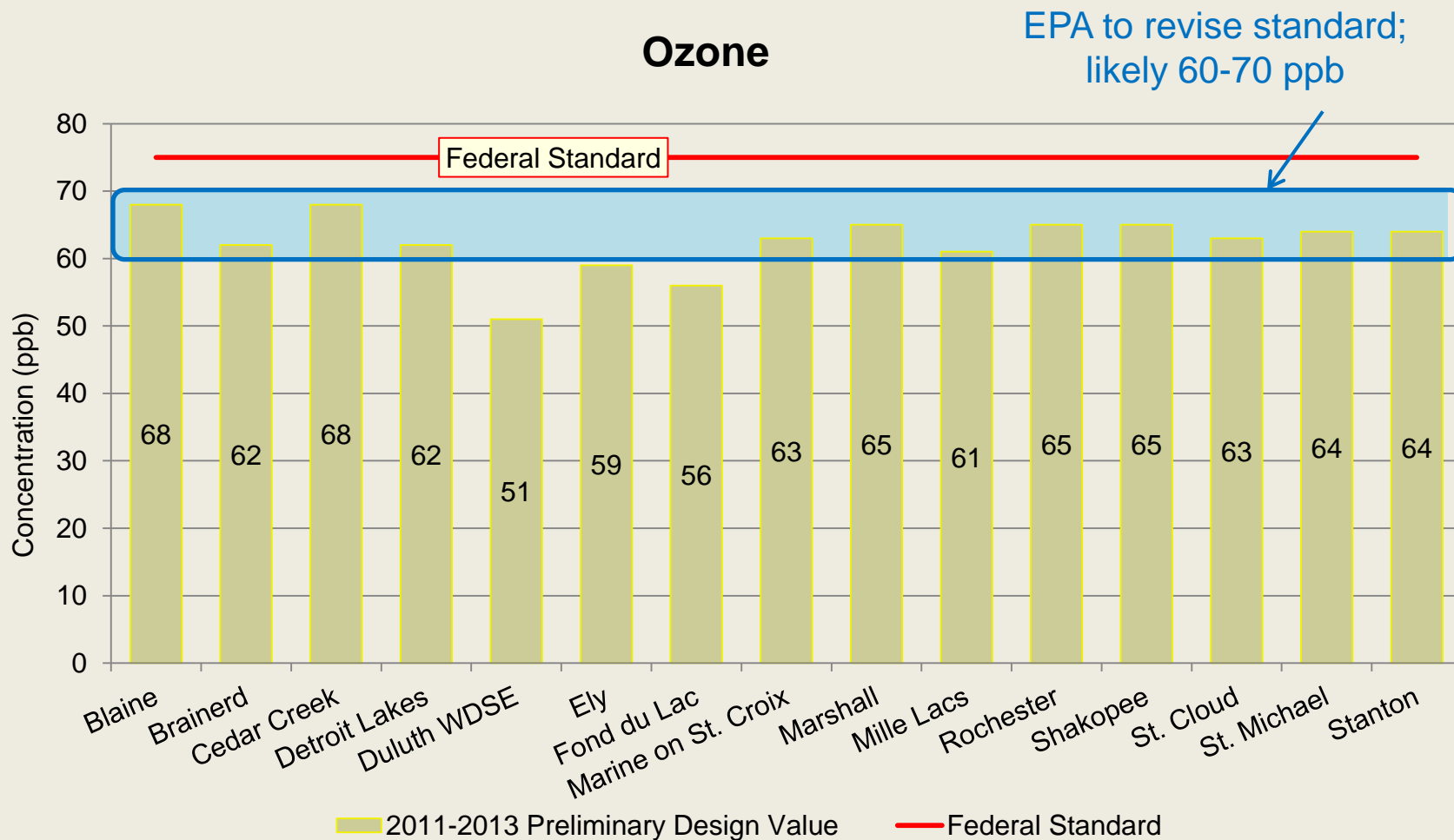
* An aquifer is a body of saturated sediment or rock that is sufficiently permeable to supply reasonable amounts of water to wells. Water table aquifers include the water table, the upper surface of fully saturated soil, sediment, or rock below the unsaturated zone. Buried artesian aquifers are composed of sand and gravel overlain by confining (low permeability) clay or till. Bedrock aquifers are composed of one or more saturated bedrock units.



Air Quality



Meeting federal air quality standards



Consequences of Nonattainment

- Adverse health impacts
- Economic consequences – up to \$240 million/yr
- More permitting requirements, more monitoring and modeling, State Implementation Plan
- More red tape



EPA's 111(d) Clean Power Rule

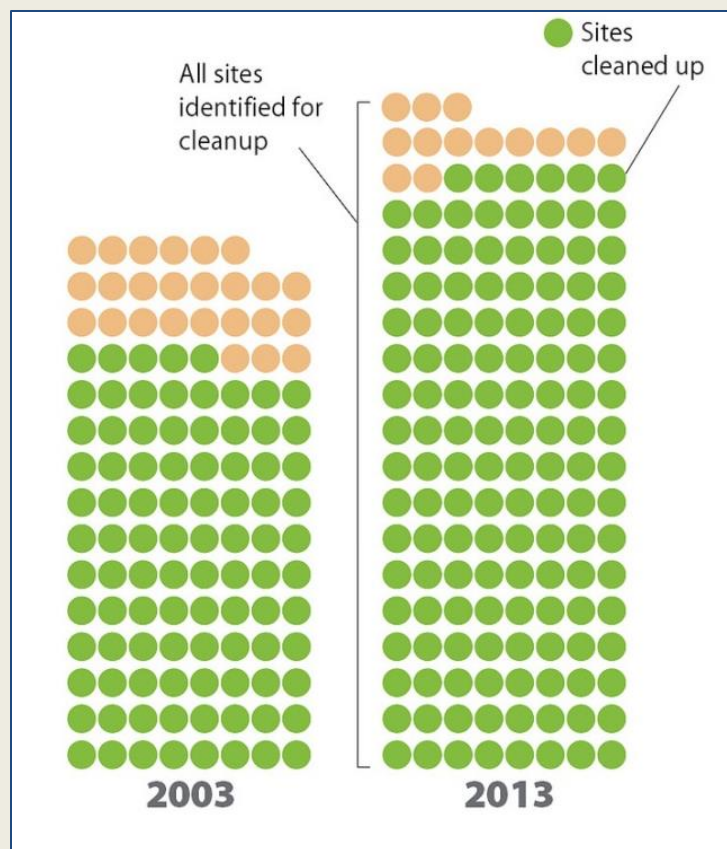
- Minnesota is a national model for reducing carbon pollution and increasing the use of renewable energy
- Minnesota is an early adopter of best practices – balance future goals
- Good for Minnesota's health, jobs, economy
- Still working with EPA to resolve calculation details



Land and Waste



How much polluted land is being returned to productive use?



Cleaning up property that has been damaged by pollution from decades ago helps to make the land available for redevelopment.

	2003	2013
Identified sites	14,749	18,513
Cleaned up sites	12,523	17,680



Operational Excellence

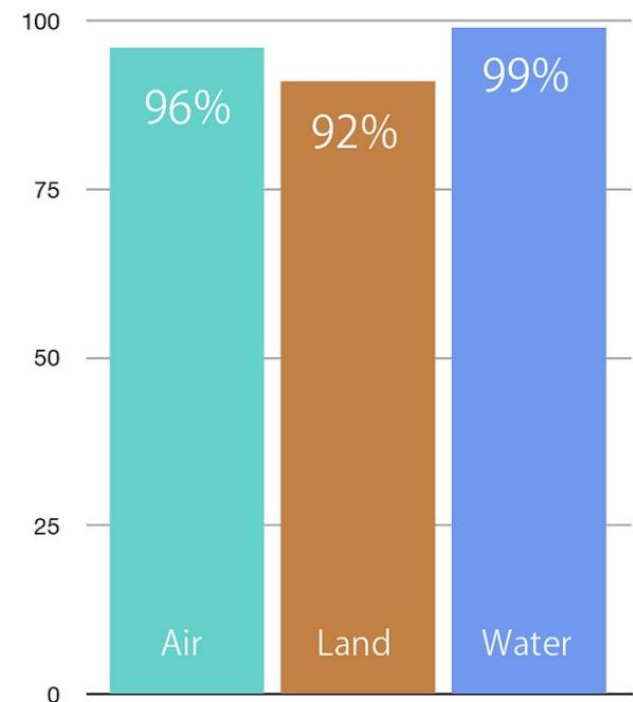


Compliance rates for permit holders

Most permit holders are fully compliant with all their permit requirements.

The MPCA offers technical assistance, grants/loans, and customer service to help businesses meet or exceed the standards in their permits.

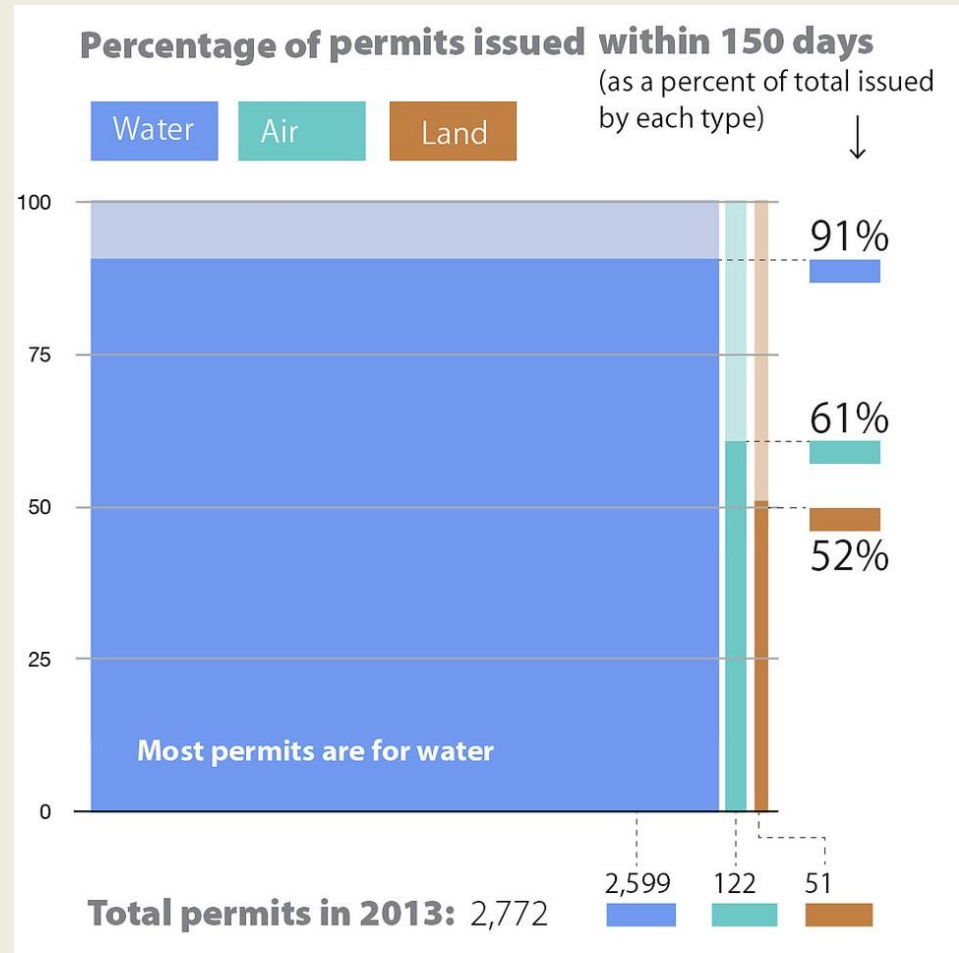
Percentage of permit holders complying with requirements



Speeding up permits

MPCA has worked hard to process permits more quickly without compromising our environment.

We are now able to issue 89% of all permits within 150 days.



Things I used to know...

